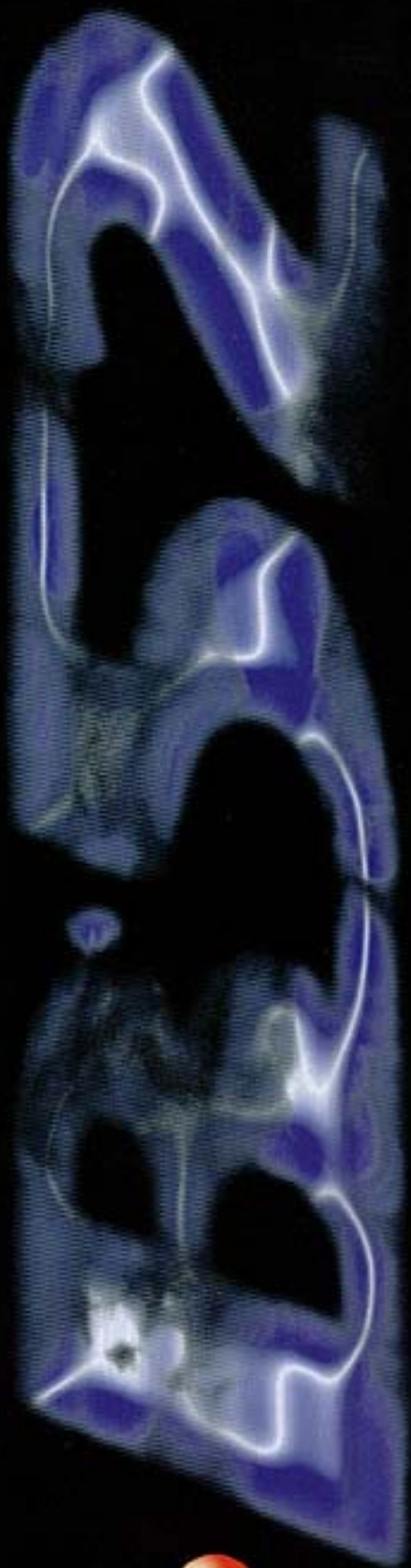


product catalog 2003/4

CAR AUDIO & SECURITY




B52
CAR AUDIO & SECURITY

INDEX

- 4 PISCIS
- 5 GEMINIS X
- 6 ACUARIUS / SCORPIOS
- 8 ATTACK
- 10 X-RAY
- 13 TURBOSPEAKER
- 14 EVOLUTION
- 15 FURIOUS
- 16 TWEETERS
- 18 SUBWOOFER WIRING DIAGRAMS
- 20 DVD PLAYER RADIO / LCD MONITOR
- 21 MP3 PLAYER RADIO
- 22 CAPACITORS
- 24 AMPLIFIERS RACE
- 26 AMPLIFIERS MATCH
- 28 AMPLIFIER INSTALLATION KIT
- 29 OXYGEN-FREE RCA INTER CONNECTORS
- 30 POWER CABLE
- 31 SPEAKER WIRE
- 32 HIGH END ACCESSORIES



B



INTRO

B52 INTRODUCES its new line of products 2003-2004. PRODUCTS DESIGNED TO TAKE ADVANTAGE OF THE NEWEST ENTERTAINMENT AND SECURITY TECHNOLOGIES.

FROM CONNECTORS TO HIGH TECH AMPLIFIERS, AS WELL AS MP3 PLAYERS AND MOBILE VIDEO OUR PRODUCTS HAVE BEEN CREATED TO COMPLY WITH UNLIMITED APPLICATIONS MAINTAINING THE HIGHEST QUALITY STANDARDS.

YEAR AFTER YEAR OUR ENGINEERS AND DESIGNERS ARE COMMITTED TO RESEARCH AND DEVELOP THE BEST SYSTEMS FOR AUTOMOBILES. IN OUR 2003 - 2004 CATALOGUE, WE HAVE MADE MAJOR CHANGES, INTRODUCING TWO FULL RANGE SPEAKER LINES, 2 SUBWOOFERS AND TWEETERS.

IN THE FIELD OF SECURITY, YOU WILL FIND A COMPLETE LINE OF CAR ALARMS, STARTING WITH NEW MODELS SUCH AS AQUARIUS ALONG WITH THE IMPROVED GEMINIS X AND THE TOP OF THE LINE "PISCIS".

THERE IS MORE, TO OUR SELECTION OF TRADITIONAL CASSETTE AND CD PLAYERS WE HAVE INCORPORATED DVD, MP3 PLAYERS AND LCD MONITORS.

IN ADDITION WE HAVE SELECTED THE MOST USEFUL AND PRACTICAL INSTALLATION ACCESSORIES IN ORDER TO PROVIDE A POWERFUL TOOL TO PROFESSIONAL INSTALLERS AND CONSUMERS.



B52
CAR AUDIO & SECURITY



PISCIS



PISCIS

4502598

Remote control security system with
 2-way LCD communication transceiver
 Password pin-code override system
 Programmable "Random Pulse Siren"
 3-mode adjustable dual zone shock sensor forms remote
 Remote control passive sensing, by-pass & Valet mode
 Programmable Timer Control Channel 3/4/5/6 Output
 Installer test mode. Allows all testable and
 adjustable functions to be operated by remote control
 One 2-way code hopping LCD remote transceiver
 2-way FM/AM transmission up to 1000m (3,300 ft) range
 Entry function confirmed by audio and LCD display
 Over 40 remote programmable features
 Anti scan and Anti grab
 Noise abatement circuit
 5 separate trigger zone
 Optional driver paging



4475
 4476
 4477
 4478
 4479
 4480
 4481
 4482
 4483
 4484
 4485
 4486
 4487
 4488
 4489
 4490
 4491
 4492
 4493
 4494
 4495
 4496
 4497
 4498
 4499
 4500
 4501
 4502
 4503
 4504
 4505
 4506
 4507
 4508
 4509
 4510
 4511
 4512
 4513
 4514
 4515
 4516
 4517
 4518
 4519
 4520
 4521
 4522
 4523
 4524
 4525
 4526
 4527
 4528
 4529
 4530
 4531
 4532
 4533
 4534
 4535
 4536
 4537
 4538
 4539
 4540
 4541
 4542
 4543
 4544
 4545
 4546
 4547
 4548
 4549
 4550
 4551
 4552
 4553
 4554
 4555
 4556
 4557
 4558
 4559
 4560
 4561
 4562
 4563
 4564
 4565
 4566
 4567
 4568
 4569
 4570
 4571
 4572
 4573
 4574
 4575
 4576
 4577
 4578
 4579
 4580
 4581
 4582
 4583
 4584
 4585
 4586
 4587
 4588
 4589
 4590
 4591
 4592
 4593
 4594
 4595
 4596
 4597
 4598
 4599
 4600
 4601
 4602
 4603
 4604
 4605
 4606
 4607
 4608
 4609
 4610
 4611
 4612
 4613
 4614
 4615
 4616
 4617
 4618
 4619
 4620
 4621
 4622
 4623
 4624
 4625
 4626
 4627
 4628
 4629
 4630
 4631
 4632
 4633
 4634
 4635
 4636
 4637
 4638
 4639
 4640
 4641
 4642
 4643
 4644
 4645
 4646
 4647
 4648
 4649
 4650
 4651
 4652
 4653
 4654
 4655
 4656
 4657
 4658
 4659
 4660
 4661
 4662
 4663
 4664
 4665
 4666
 4667
 4668
 4669
 4670
 4671
 4672
 4673
 4674
 4675
 4676
 4677
 4678
 4679
 4680
 4681
 4682
 4683
 4684
 4685
 4686
 4687
 4688
 4689
 4690
 4691
 4692
 4693
 4694
 4695
 4696
 4697
 4698
 4699
 4700
 4701
 4702
 4703
 4704
 4705
 4706
 4707
 4708
 4709
 4710
 4711
 4712
 4713
 4714
 4715
 4716
 4717
 4718
 4719
 4720
 4721
 4722
 4723
 4724
 4725
 4726
 4727
 4728
 4729
 4730
 4731
 4732
 4733
 4734
 4735
 4736
 4737
 4738
 4739
 4740
 4741
 4742
 4743
 4744
 4745
 4746
 4747
 4748
 4749
 4750
 4751
 4752
 4753
 4754
 4755
 4756
 4757
 4758
 4759
 4760
 4761
 4762
 4763
 4764
 4765
 4766
 4767
 4768
 4769
 4770
 4771
 4772
 4773
 4774
 4775
 4776
 4777
 4778
 4779
 4780
 4781
 4782
 4783
 4784
 4785
 4786
 4787
 4788
 4789
 4790
 4791
 4792
 4793
 4794
 4795
 4796
 4797
 4798
 4799
 4800
 4801
 4802
 4803
 4804
 4805
 4806
 4807
 4808
 4809
 4810
 4811
 4812
 4813
 4814
 4815
 4816
 4817
 4818
 4819
 4820
 4821
 4822
 4823
 4824
 4825
 4826
 4827
 4828
 4829
 4830
 4831
 4832
 4833
 4834
 4835
 4836
 4837
 4838
 4839
 4840
 4841
 4842
 4843
 4844
 4845
 4846
 4847
 4848
 4849
 4850
 4851
 4852
 4853
 4854
 4855
 4856
 4857
 4858
 4859
 4860
 4861
 4862
 4863
 4864
 4865
 4866
 4867
 4868
 4869
 4870
 4871
 4872
 4873
 4874
 4875
 4876
 4877
 4878
 4879
 4880
 4881
 4882
 4883
 4884
 4885
 4886
 4887
 4888
 4889
 4890
 4891
 4892
 4893
 4894
 4895
 4896
 4897
 4898
 4899
 4900
 4901
 4902
 4903
 4904
 4905
 4906
 4907
 4908
 4909
 4910
 4911
 4912
 4913
 4914
 4915
 4916
 4917
 4918
 4919
 4920
 4921
 4922
 4923
 4924
 4925
 4926
 4927
 4928
 4929
 4930
 4931
 4932
 4933
 4934
 4935
 4936
 4937
 4938
 4939
 4940
 4941
 4942
 4943
 4944
 4945
 4946
 4947
 4948
 4949
 4950
 4951
 4952
 4953
 4954
 4955
 4956
 4957
 4958
 4959
 4960
 4961
 4962
 4963
 4964
 4965
 4966
 4967
 4968
 4969
 4970
 4971
 4972
 4973
 4974
 4975
 4976
 4977
 4978
 4979
 4980
 4981
 4982
 4983
 4984
 4985
 4986
 4987
 4988
 4989
 4990
 4991
 4992
 4993
 4994
 4995
 4996
 4997
 4998
 4999
 5000



PISCIS



PISCIS

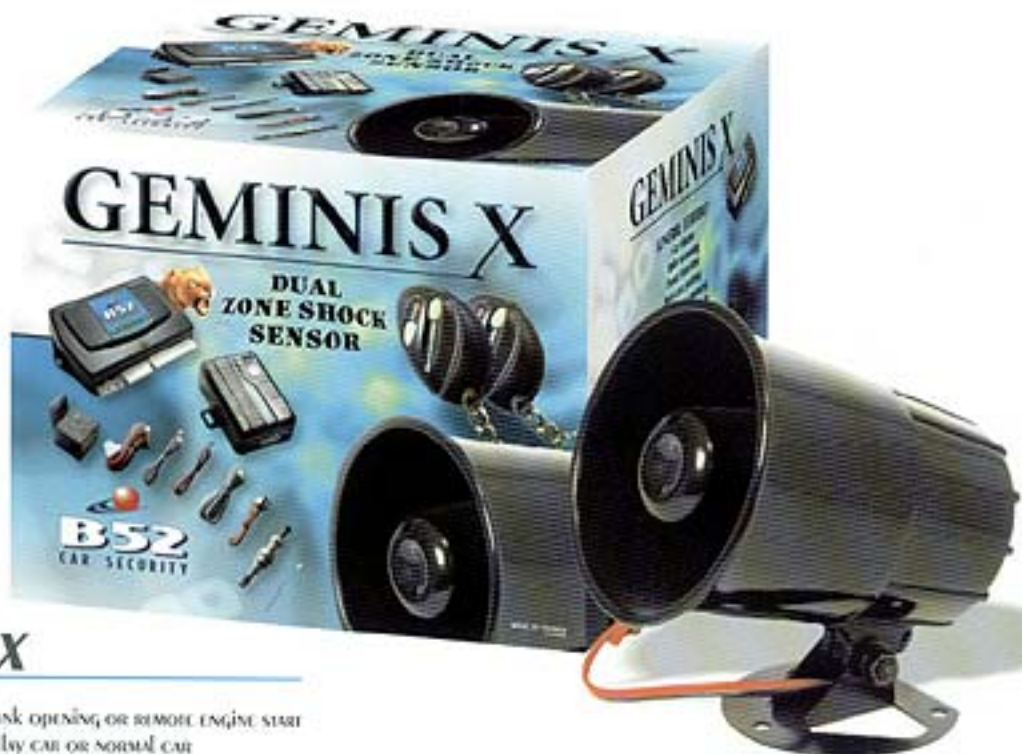
4502598

Remote control security system with
 2-way LCD communication transceiver
 Password pin-code override system
 Programmable "Random Pulse Siren"
 3-mode adjustable dual zone shock sensor forms remote
 Remote control passive sensing, by-pass & Valet mode
 Programmable Timer Control Channel 3/4/5/6 Output
 Installer test mode. Allows all testable and
 adjustable functions to be operated by remote control
 One 2-way code hopping LCD remote transceiver
 2-way FM/AM transmission up to 1000m (3,300 ft) range
 Entry function confirmed by audio and LCD display
 Over 40 remote programmable features
 Anti scan and Anti grab
 Noise abatement circuit
 5 separate trigger zone
 Optional driver paging



SALES
 UK: 01203 252525
 USA: 1-800-850-8508
 CANADA: 1-800-850-8508
 AUSTRALIA: 1-800-850-8508
 SOUTH AFRICA: 1-800-850-8508
 INDIA: 1-800-850-8508
 CHINA: 1-800-850-8508
 JAPAN: 1-800-850-8508
 SOUTH KOREA: 1-800-850-8508
 HONG KONG: 1-800-850-8508
 TAIWAN: 1-800-850-8508
 THAILAND: 1-800-850-8508
 MALAYSIA: 1-800-850-8508
 SINGAPORE: 1-800-850-8508
 PHILIPPINES: 1-800-850-8508
 VIETNAM: 1-800-850-8508
 BRAZIL: 1-800-850-8508
 ARGENTINA: 1-800-850-8508
 CHILE: 1-800-850-8508
 COLOMBIA: 1-800-850-8508
 COSTA RICA: 1-800-850-8508
 CUBA: 1-800-850-8508
 DOMINICAN REPUBLIC: 1-800-850-8508
 ECUADOR: 1-800-850-8508
 EL SALVADOR: 1-800-850-8508
 GUATEMALA: 1-800-850-8508
 HONDURAS: 1-800-850-8508
 NICARAGUA: 1-800-850-8508
 PANAMA: 1-800-850-8508
 PARAGUAY: 1-800-850-8508
 PERU: 1-800-850-8508
 PUERTO RICO: 1-800-850-8508
 VENEZUELA: 1-800-850-8508

GEMINIS X



GEMINIS X

4502069

Auxiliary 1st output for trunk opening or remote engine start
Available for door light delay car or normal car

Special Asian jacking by switch

Ignition safety door lock/unlock

Air compressor central lock

Parking lights relay built-in

Clamp driver arm/dismarm

Arm condition memory

2 stage shock sensor

Remote valet mode

Last door arming

Two pulse unlock

Security re-arm

Asian jacking

Code Learning

Basic Functions

Anti-scanning

Smart LED

Car finder



B52



AQUARIUS



AQUARIUS

4502545

- Audible warning signal when door not properly closed
- Passive Negative or Positive pulse for door lock
- AntiHijack Function
- Remote Operating System
- MultiFunction LED Indicator
- User Friendly Programming
- Audible or Silent Arming via Transmitter
- Parking Light Confirmation
- Transmitter Code Learning System
- Passive or Active Arming
- Remote Engine Cutoff
- Automatic Rearm Function
- Zone Defective bypass
- Valet Mode
- Last Door Arming
- Mute Mode
- WashAway



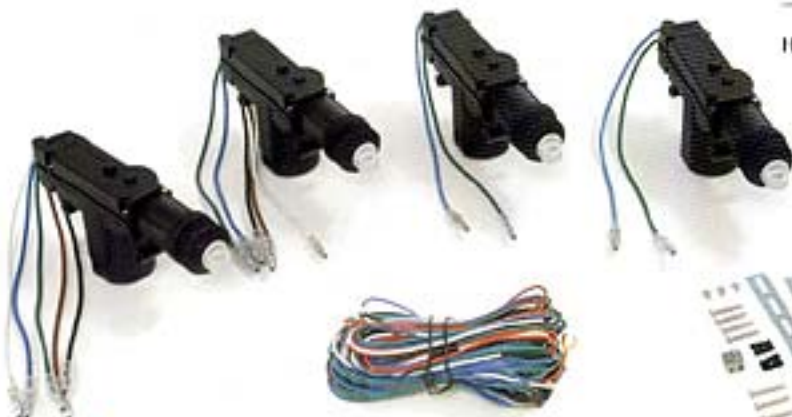
MICROWAVE SENSOR

4502590

- Dual zone
- Microwave detector (inuda)



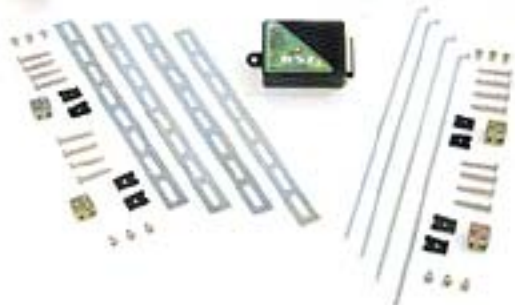
SKORPIOS PLUS



SKORPIOS PLUS

4502718

- Handy to Lock/Unlock by Using Key on Front Door
- Compatible With Pisco, Genesis X, Aquarius & Taurus Car Alarm
- Convenient to Install
- Control Kit
- Two Lock Buttons
- Durable With Guaranteed Quality
- Suitable for Most Vehicles



ATTACK

AT - 573

105-4181

Inch: 5" x 7" (also fits 6" x 8")

Max. Input Power: 280W

Rated Input Power: 50W

Impedance: 4 Ω

Frequency Response: 22 Hz - 22 KHz

Sensitivity: 91dB (W/1m)

Way: 3

Magnet: 15 oz

Voice Coil: 1" Aluminium

Tweeter: Pi-Mylar Dome

Cone: Poly Injection

Available in Pair



AT - 694

105-4190

Inch: 6" x 9"

Max. Input Power: 400W

Rated Input Power: 70W

Impedance: 4 Ω

Frequency Response: 28 Hz - 22 KHz

Sensitivity: 92dB(W/1m)

Way: 4

Magnet: 25 oz

Voice Coil: 1.5" Aluminium

Tweeter: Pi-Mylar Dome

Cone: Poly Injection

Available in Pair



 B52



XR - 230

1054086

Incl: 3.5"

Max. Input Power: 150w

Rated Input Power: 20w

Impedance: 4 Ω

Frequency Response: 90 Hz - 22 KHz

Sensitivity: 90dB (1w/1m)

Way: 2

Magnet: 8 oz

Voice coil: 0.75" Aluminium

Tweeter: Pci Mylar Dome

Cone: Poly Injection

Available in Pair



XR - 240

1054095

Incl: 4"

Max. Input Power: 150w

Rated Input Power: 20w

Impedance: 4 Ω

Frequency Response: 80 Hz - 22 KHz

Sensitivity: 90dB (1w/1m)

Way: 2

Magnet: 8 oz

Voice coil: 0.75" Aluminium

Tweeter: Pci Mylar Dome

Cone: Poly Injection

Available in Pair

XR - 250

1054109

Incl: 5.25"

Max. Input Power: 200w

Rated Input Power: 25w

Impedance: 4 Ω

Frequency Response: 70 Hz - 22 KHz

Sensitivity: 90dB (1w/1m)

Way: 2

Magnet: 8 oz

Voice coil: 0.75" Aluminium

Tweeter: Pci Mylar Dome

Cone: Poly Injection

Available in Pair



XR - 360

1054188

Incl: 6.50"

Max. Input Power: 250w

Rated Input Power: 40w

Impedance: 4 Ω

Frequency Response: 50 Hz - 22 KHz

Sensitivity: 91dB (1w/1m)

Way: 3

Magnet: 12 oz

Voice coil: 1" Aluminium

Tweeter: Pci Mylar Dome

Cone: Poly Injection

Available in Pair



XR - 246

1054100

Incl: 4"x 6"

Max. Input Power: 200w

Rated Input Power: 25w

Impedance: 4 Ω

Frequency Response: 65 Hz - 22 KHz

Sensitivity: 90dB (1w/1m)

Way: 2

Magnet: 8 oz

Voice coil: 0.75" Aluminium

Tweeter: Pci Mylar Dome

Cone: Poly Injection

Available in Pair





X-RAY

XR - 357

105-4127

Inch: 5"x 7" (also fits 6"x 8")

Max. Input Power: 250w

Rated Input Power: 40w

Impedance: 4 Ω

Frequency Response: 45 Hz - 22 KHz

Sensitivity: 91dB (1w/1m)

Way: 3

Magnet: 12 oz

Voice coil: 1" Aluminium

Tweeter: Pri Mylar Dome

Cone: Poly Injection

Available in Pair



XR - 469

105-4156

Inch: 6"x 9"

Max. Input Power: 500w

Rated Input Power: 90w

Impedance: 4 Ω

Frequency Response: 30 Hz - 22 KHz

Sensitivity: 92dB (1w/1m)

Way: 4

Magnet: 35 oz

Voice coil: 1.5" Aluminium

Tweeter: Pri Mylar Dome

Cone: Poly Injection

Available in Pair



FREQUENCY
LED POWER METER
CB
TWEETERS
TANK POWER
CROSSFEED
BRIDGED POWER
AMPLIFIERS
AUTO POWER
SIGNAL
TONE
BASS BOOST FREQUENCY
SIGNAL PROCESSORS
LOW PASS CROSSOVER
DISK
COMPACT DISC RECEIVERS
SUBWOOFER
GAIN CONTROL
OHMS
LINE OUTPUTS
LEVEL CONTROL
WAV ELECTRONIC
LED
LCD MONITORS
BANDS
INPUT/OUTPUT DVD PLAYER
LOUDSPEAKERS
IMPEDANCE
COMPATIBILITY
VOICE COIL
SPK
SUBWOOFER
AUDIO SYSTEMS
EQ
LOUDNESS
DISTRIBUTION
BALANCE
FREQUENCY CONTROL
ACCESSORIES
CAPACITANCE
GAUGE
BATTERY TERMINAL
DETACHABLE
MAGNET
FILM
FLUORESCENT CORE

SUBWOOFERS

ONE OF OUR GREATEST CHANGES IS THE IMPROVEMENT OF OUR SUBWOOFERS LINE, WE HAVE WORKED HARD TO BRING TRUE BASS COMBINED WITH EXCITING DESIGNS THAT USERS WILL ENJOY WITH OUR TWO LINES; EVOLUTION AND FURIOUS.

B-52 SUBWOOFERS APPEAR IN A WIDE VARIETY OF SIZES AND CONFIGURATIONS TO FIT ALL NEEDS. OUR SUBWOOFERS SPECIFICATIONS ARE DIRECTED TO COMPLY WITH A VARIETY OF APPLICATION FROM PRE-MANUFACTURED TO PERSONALIZED SPEAKER BOXES.

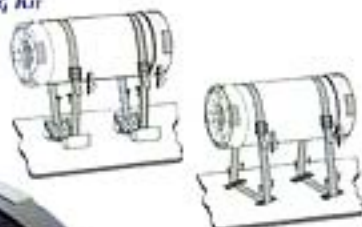


TURBOSPEAKER



BS2

Mounting Kit



ATR 1250

5309769

12" TurboSpeaker with amplifier
300mm paper coated
cone foam edge woolen
Peak power: 500w
RMS power: 140w
Frequency response: 20-20000Hz
Output: 80-120Hz (adjustable)
Power source: DC 12v-14v negative ground
Phase: 0°-180°
Mounting Kit



ATR 1045

5309951

10" TurboSpeaker with amplifier
250mm paper coated cone
foam edge woolen
Peak power: 450w
RMS power: 120w
Frequency response: 20-20000Hz
Output: 80-120Hz (adjustable)
Power source: DC 12v-14v negative ground
Phase: 0°-180°
Mounting Kit

ATR 835

5309942

8" TurboSpeaker with amplifier
200mm paper coated cone
foam edge woolen
Peak power: 350w
RMS power: 100w
Frequency response: 20-20000Hz
Output: 80-120Hz (adjustable)
Power source: DC 12v-14v negative ground
Phase: 0°-180°
Mounting Kit

TR 450

5309778

10" TurboSpeaker
100mm paper + wool coated
cone rubber edge woolen
Peak power: 450w
RMS power: 120w
Frequency response: 30-15000Hz
Magnet: 50 oz
Voice coil: 2" ASV
Mounting Kit

Mounting Kit

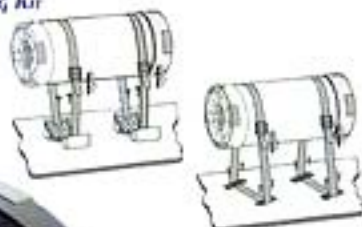


TURBOSPEAKER



BS2

Mounting Kit



ATR 1250

5309769

12" TurboSpeaker with amplifier
300mm paper coated
cone foam edge woolen
Peak power: 500w
RMS power: 140w
Frequency response: 20-20000Hz
Output: 80-120Hz (adjustable)
Power source: DC 12v-14v negative ground
Phase: 0°-180°
Mounting Kit



ATR 1045

5309951

10" TurboSpeaker with amplifier
250mm paper coated cone
foam edge woolen
Peak power: 450w
RMS power: 120w
Frequency response: 20-20000Hz
Output: 80-120Hz (adjustable)
Power source: DC 12v-14v negative ground
Phase: 0°-180°
Mounting Kit

ATR 835

5309942

8" TurboSpeaker with amplifier
200mm paper coated cone
foam edge woolen
Peak power: 350w
RMS power: 100w
Frequency response: 20-20000Hz
Output: 80-120Hz (adjustable)
Power source: DC 12v-14v negative ground
Phase: 0°-180°
Mounting Kit

TR 450

5309778

10" TurboSpeaker
100mm paper + wool coated
cone rubber edge woolen
Peak power: 450w
RMS power: 120w
Frequency response: 30-15000Hz
Magnet: 50 oz
Voice coil: 2" ASV
Mounting Kit

Mounting Kit





EVOLUTION

EV - 830

1054033
 Incls: 8"
 Max. Input Power: 300w
 Rated Input Power: 150w
 Impedance: 4 Ω
 Sensitivity: 90dB (1w/1m)
 Magnet: 50 oz
 Voice coil: 1.5"
 Injection Cast Woofer



EV - 1040

1054044
 Incls: 10"
 Max. Input Power: 400w
 Rated Input Power: 200w
 Impedance: 4 Ω
 Sensitivity: 92dB (1w/1m)
 Magnet: 50 oz
 Voice coil: 2"
 Injection Cast Woofer



EV - 1250

1054055
 Incls: 12"
 Max. Input Power: 500w
 Rated Input Power: 250w
 Impedance: 4 Ω
 Sensitivity: 97dB (1w/1m)
 Magnet: 60 oz
 Voice coil: 2"
 Injection Cast Woofer



EV - 1560

1054066
 Incls: 15"
 Max. Input Power: 600w
 Rated Input Power: 300w
 Impedance: 4 Ω
 Sensitivity: 97dB (1w/1m)
 Magnet: 70 oz
 Voice coil: 2.5"
 Injection Cast Woofer



1054033
 1054044
 1054055
 1054066
 1054077
 1054088
 1054099
 1054100
 1054111
 1054122
 1054133
 1054144
 1054155
 1054166
 1054177
 1054188
 1054199
 1054200
 1054211
 1054222
 1054233
 1054244
 1054255
 1054266
 1054277
 1054288
 1054299
 1054300
 1054311
 1054322
 1054333
 1054344
 1054355
 1054366
 1054377
 1054388
 1054399
 1054400
 1054411
 1054422
 1054433
 1054444
 1054455
 1054466
 1054477
 1054488
 1054499
 1054500
 1054511
 1054522
 1054533
 1054544
 1054555
 1054566
 1054577
 1054588
 1054599
 1054600
 1054611
 1054622
 1054633
 1054644
 1054655
 1054666
 1054677
 1054688
 1054699
 1054700
 1054711
 1054722
 1054733
 1054744
 1054755
 1054766
 1054777
 1054788
 1054799
 1054800
 1054811
 1054822
 1054833
 1054844
 1054855
 1054866
 1054877
 1054888
 1054899
 1054900
 1054911
 1054922
 1054933
 1054944
 1054955
 1054966
 1054977
 1054988
 1054999
 1055000



FURIOUS

Dual Coil

FR - 610

105-1210

Inch: 10"

Max. Input Power: 600w

Rated Input Power: 200w

Impedance: 4 Ω

Sensitivity: 95dB (1w/1m)

Magnet: 60 oz

Voice coil: 2" Dual

Injection Case: Woolen



FR - 812

105-1202

Inch: 12"

Max. Input Power: 800w

Rated Input Power: 200w

Impedance: 4 Ω

Sensitivity: 95dB (1w/1m)

Magnet: 70 oz

Voice coil: 2.5" Dual

Injection Case: Woolen



FR - 1015

105-1219

Inch: 15"

Max. Input Power: 1000w

Rated Input Power: 400w

Impedance: 4 Ω

Sensitivity: 97dB (1w/1m)

Magnet: 80 oz

Voice coil: 3" Dual

Injection Case: Woolen



B52



If you wish to reinforce front speakers and purify stereo image, B52 has several tweeters designed to improve without damaging the architecture of your car. All of them with a mounting system created to simplify installation.

CLOUD

CL - 11

1028229

Diaphragm: Polipropylene

Max. Input Power: 250w

Rated Input Power: 100w

Impedance: 4 Ω

Frequency Response: 5 KHz - 25 KHz

Sensitivity: 97dB (1w/1m)

Available in Pair



CL - 55

1028258

Diaphragm: Polipropylene

Max. Input Power: 250w

Rated Input Power: 100w

Impedance: 4 Ω

Frequency Response: 5 KHz - 25 KHz

Sensitivity: 97dB (1w/1m)

Available in Pair



TW 3

1030520

Max. Input Power: 150w

Impedance: 4 ohms

Frequency Response: 3 KHz - 20 KHz

Sensitivity: 92dB (1w/1m)

Diaphragm: Piezo

Available in Pair



TW 1

1030511

Max. Input Power: 150w

Impedance: 4 ohms

Frequency Response: 3 KHz - 20 KHz

Sensitivity: 92dB (1w/1m)

Diaphragm: Piezo

Available in Pair



LET'S WORK TOGETHER TO IMPROVE YOUR CAR'S SOUND SYSTEM. WE'VE GOT THE ANSWERS TO ALL YOUR QUESTIONS. CONTACT US TODAY AT 1-800-854-8548. WE'LL BE HAPPY TO HELP YOU GET THE MOST OUT OF YOUR CAR'S SOUND SYSTEM.

TWEETERS

TW 6

1050566

Max. Input Power: 150w
Impedance: 4 ohms
Frequency Response: 3 KHz - 20 Hz
Sensitivity: 94dB (W/1w)
Diaphragm: w/ Ferro Fluid
Available in Pair



TW 8

1050548

Max. Input Power: 150w
Impedance: 4 ohms
Frequency Response: 3 KHz - 20 Hz
Sensitivity: 94dB (W/1w)
Diaphragm: Polypropylene
Type: Dome
Available in Pair



TW 18

1028202

Max. Input Power: 300w
Impedance: 4/8 ohms
Frequency Response: 2 KHz - 25 Hz
Sensitivity: 99dB (W/1w)
Diaphragm: Titanium
Aluminum Bullet Hole: 1 3/4"
Available in Pair



TW 44

1028211

Max. Input Power: 400w
Impedance: 4/8 ohms
Frequency Response: 2 KHz - 22 Hz
Sensitivity: 104dB (W/1w)
Diaphragm: 1" Titanium
Mounting Depth: 3 1/8" - 2"



TW 46

1028220

Max. Input Power: 600w
Impedance: 4/8 ohms
Frequency Response: 2 KHz - 25 Hz
Sensitivity: 105dB (W/1w)
Diaphragm: 2" Titanium
Mounting Depth: 4" - 2"



B52



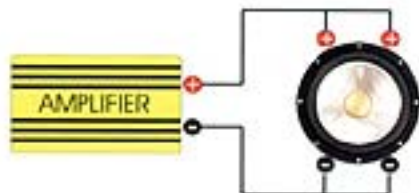
Subwoofer Wiring Diagrams

With the wide variety of subwoofers available, it's easy to get confused about the best way to wire up your system. These wiring diagrams will help you find the configuration that'll get the most out of your subs and your amplifier.

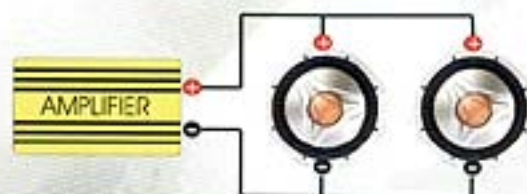
1 ohm - 2 Dual 4 ohm Voice Coil Subwoofers



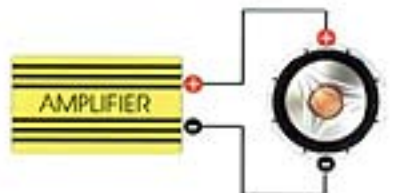
2 ohms - Dual 4 ohm Voice Coil Subwoofers



2 ohms - 2 Single 4 ohm Voice Coil Subwoofers



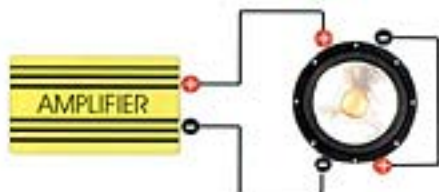
4 ohms - Single 4 ohm Voice Coil Subwoofer



4 ohms - 2 Dual 4 ohm Voice Coil Subwoofers



8 ohms - Dual 4 ohm Voice Coil Subwoofers



Dual Terminals for Dual Voice Coil



Direct Voice Coil Refrigeration



Small vertical text on the right edge of the page, likely a page number or contact information.

FREQUENCY
 MID POWER METER
 DB-
 THERMISTOR
 TIME METER
 CHANNEL
 BRIDGE POWER
 AMPLIFIERS
 RMS POWER
 SIGNAL
 NOISE
 BASS BOOST FREQUENCY
 SIGNAL PROCESSORS
 LOW PASS CROSSOVER
 DESIGN
 COMPACT DISC RECEIVERS
 SUBWOOFER
 MAIN CONTROL
 DATA
 LINE OUTPUTS
 LEVEL CONTROL
 LAMP ELECTRONIC
 LED
 LCD MONITORS
 BASS
 REVERSE POLARITY
 LOWCROSSOVERS
 IMPEDANCE
 CORRECTION
 MODE CONTROL
 SP-
 SENSORS
 AUDIO SYSTEMS
 EQ
 LAMPNESS
 OUTPUT
 BRACKET
 FRONT CONTROL
 RECEIVERS
 CAPACITOR
 GRAPE
 BATTERY TERMINAL
 METALIC
 TARGET
 MARK
 FUNCTION CODE

VIDEO

WHEN SOUND IS NO LONGER ENOUGH FOR YOU, IT'S TIME TO ENTER INTO THE WORLD OF VIDEO. WITH THE NEW B-52 A/V SYSTEM TURN YOUR VEHICLE INTO A TRUE MOBILE CINEMA. DVD PLAYER ALONG WITH THE LCD MONITOR, WILL MAKE OF YOUR TRIP A REAL ENTERTAINMENT.

PLAYERS

IN ORDER TO MAKE YOUR AUDIO SYSTEM HAVE AN EXCELLENT SOUND QUALITY, THE STARTING POINT IS A GOOD PLAYER. B-52 HAS TAKING THIS DETAIL INTO ACCOUNT AND BOTH CASSETTE PLAYERS AND CD/MP3 ARE MANUFACTURED WITH THE NEWEST IN THE FIELD OF TECHNOLOGY, DESIGN AND CONFIDENTIALITY, ENSURING YOU THE FIRST STEP TOWARDS SOUND PERFECTION.



DVD

DVD Player & LCD Monitor



DV 5400

9205635

- In-built single DVD player
- CD/CDR/CDRW compatible
- DVD/SVCD/VCD/CD/MP3 compatible
- Digital tuner AM/FM/LW-MPX PLL radio
- 24 preset memory stations
- 18 FM, 6 AM memory stations
- Multilingual on screen display menu
- Bright VFD display
- Wireless remote control
- Fold down detachable panel
- Electronic volume up/down
- Bass, treble, balance and fader controls
- Output power 80w x 4 + 20w x 1 (5.1 channel)
- Operates on 12V DC
- 2 x video output
- 1 x audio output (L+R)
- 1 x audio digital output
- Black available



LC 6500

9205627

- 6.5" TFT Monitor
- Stand alone mount design
- Dual built-in speaker
- Dual headphone jacks with individual volume control
- Speaker on/off, volume, brightness, contrast control
- DC 12V

SEL

MP3 & Cassette Receiver

MP 4500

9205609

- MP3 CD player with ID3 tag
- AM/FMMPX PLL tuning radio
- 24 preset memory stations
- 18 FM, 6 AM memory stations
- Single CD player
- MP3 compatible
- CD/CDR/CDRW compatible
- LCD display
- Electronic volume up/down
- Bass, mtrble, balance and fader controls
- Preset Eq, Response curves
- Output power 50w x 4
- RCA output
- Mechanical detachable panel
- Wireless remote control
- Black available



CT 3400

9205599

- AM/FM Cassette Receiver
- Auto reverse cassette player
- AM/FMMPX PLL tuning radio
- Mechanical detachable panel
- LCD display
- Front CDin
- Output power 30w x 2





CAPACITORS

DPC-1400

625101

DIGITAL POWER CAPACITOR

1.4 farad capacity, 20-24 volt surge

Digital voltmeter at 45° to monitor the voltage both from top and side

High performance current flow through post design

Automatic turn on/off, no remote lead required

Smooth finishing for a better installation result

Includes mounting brackets

Available in silver color



DPC-2000

625102

DIGITAL POWER CAPACITOR

2 farad capacity, 20-24 volt surge

Digital voltmeter at 45° to monitor the voltage both from top and side

High performance current flow through post design

Automatic turn on/off, no remote lead required

Smooth finishing for a better installation result

Includes mounting brackets

Available in silver color



 B52

FREQUENCY
LSE POWER BIRTH
ON
TUNING
OVER POWER
CONTROL
BROAD POWER
AMPLIFYING
WITH POWER
SOUND
NOISE
NEW BEST FREQUENCY
SOUND PROCESSORS
LOW PRICE POWER
DESIGN
COMPACT D.O. RECEIVERS
SPEAKER
UNIT CONTROL
OVER
LINE OUTPUTS
LEVEL CONTROL
SOUND ELECTRONIC
LED
LCD MONITORING
POWER
INTEGRABLE AUDIO PLAYER
LIDCAPS POWER
EFFICIENCY
EXCELLENCE
VOICE COIL
SPEAKER
SPEAKER
AUDIO SYSTEMS
10
LOWEST
OUTPUT
IMPEDANCE
TUNING CONTROL
EXCELLENCE
EXCELLENCE
SOUND
WIRELESS SIGNAL
SPEAKER
TUNING
PERM
PULSED OFF

POWER AMPLIFIERS

When you wish to obtain higher sound pressure, the most effective way is to add power amplifiers. But you should not only increase signal but also maintain the quality of the original sound source.

With B-52 power amplifiers, you are invited to turn up the volume and obtain power and pure sound without caring about distortion.



B52



AMPLIFIERS



2 Ohm Stable
High Power Bridgeable Mosfet Amplifier
External Subwoofer Control Included
Mosfet Power Supply
TriMode Operation
18dB Bass Boost

Low/Hi Pass Variable Crossover
Hi/Low Input
Gold Plated RCA Low Level Inputs
Power & Protection LEDs
Variable Input Gain Control



TriMode Operation



RACE RC 250

5209958

Max Power 2 Ohms: 200w x 2
RMS Power 4 Ohms: 75w x 2
Bridge Power 4 Ohms: 400w
S/N Ratio: 105dB
THD: 0.05%
Channel Separation: 59dB
Frequency Response: 10Hz-40kHz
Input Sensitivity: 200mV/5V
X-Over Selectable: Yes
High Pass Frequency: 50Hz-500Hz
Band Pass Frequency: Upper 3kHz-6kHz
Band Pass Frequency: Lower 50Hz-500Hz
Low Pass Frequency: 50Hz-500Hz
Dimensions: 9 13/16" W x 2 1/4" H x 8 1/2" L
Included External Subwoofer Control

RACE RC 450

5209947

Max Power 2 Ohms: 300w x 2
RMS Power 4 Ohms: 110w x 2
Bridge Power 4 Ohms: 600w
S/N Ratio: 105dB
THD: 0.05%
Channel Separation: 59dB
Frequency Response: 10Hz-40kHz
Input Sensitivity: 200mV/5V
X-Over Selectable: Yes
High Pass Frequency: 50Hz-500Hz
Band Pass Frequency: Upper 3kHz-6kHz
Band Pass Frequency: Lower 50Hz-500Hz
Low Pass Frequency: 50Hz-500Hz
Dimensions: 9 13/16" W x 2 1/4" H x 10 1/2" L
Included External Subwoofer Control

RACE RC 550

5209956

Max Power 2 Ohms: 400w x 2
RMS Power 4 Ohms: 150w x 2
Bridge Power 4 Ohms: 800w
S/N Ratio: 105dB
THD: 0.05%
Channel Separation: 59dB
Frequency Response: 10Hz-40kHz
Input Sensitivity: 200mV/5V
X-Over Selectable: Yes
High Pass Frequency: 50Hz-500Hz
Band Pass Frequency: Upper 3kHz-6kHz
Band Pass Frequency: Lower 50Hz-500Hz
Low Pass Frequency: 50Hz-500Hz
Dimensions: 9 13/16" W x 2 1/4" H x 12 1/2" L
Included External Subwoofer Control





Triode Operation



X-Over Double



RACE RC 600

5209965

Max Power 2 Ohms: 200w x 4
 RMS Power 4 Ohms: 75w x 4
 Bridge Power 4 Ohms: 400w x 2
 S/N Ratio: 105dB
 THD: 0.05%
 Channel Separation: 59dB
 Frequency Response: 10Hz-10KHz
 Input Sensitivity: 200mV/5V
 X-Over Double: Yes
 X-Over Selectable: Yes
 High Pass Frequency: 50Hz-500Hz
 Band Pass Frequency: Upper 3KHz-6KHz
 Band Pass Frequency: Lower 50Hz-500Hz
 Low Pass Frequency: 50Hz-500Hz
 Dimensions: 9 15/16"W x 2 1/4"H x 14"L
 Included External Subwoofer Control

RACE RC 700

5209974

Max Power 2 Ohms: 300w x 4
 RMS Power 4 Ohms: 110w x 4
 Bridge Power 4 Ohms: 600w x 2
 S/N Ratio: 105dB
 THD: 0.05%
 Channel Separation: 59dB
 Frequency Response: 10Hz-10KHz
 Input Sensitivity: 200mV/5V
 X-Over Double: Yes
 X-Over Selectable: Yes
 High Pass Frequency: 50Hz-500Hz
 Band Pass Frequency: Upper 3KHz-6KHz
 Band Pass Frequency: Lower 50Hz-500Hz
 Low Pass Frequency: 50Hz-500Hz
 Dimensions: 9 15/16"W x 2 1/4"H x 15 1/2"L
 Included External Subwoofer Control

RACE RC 800

5209983

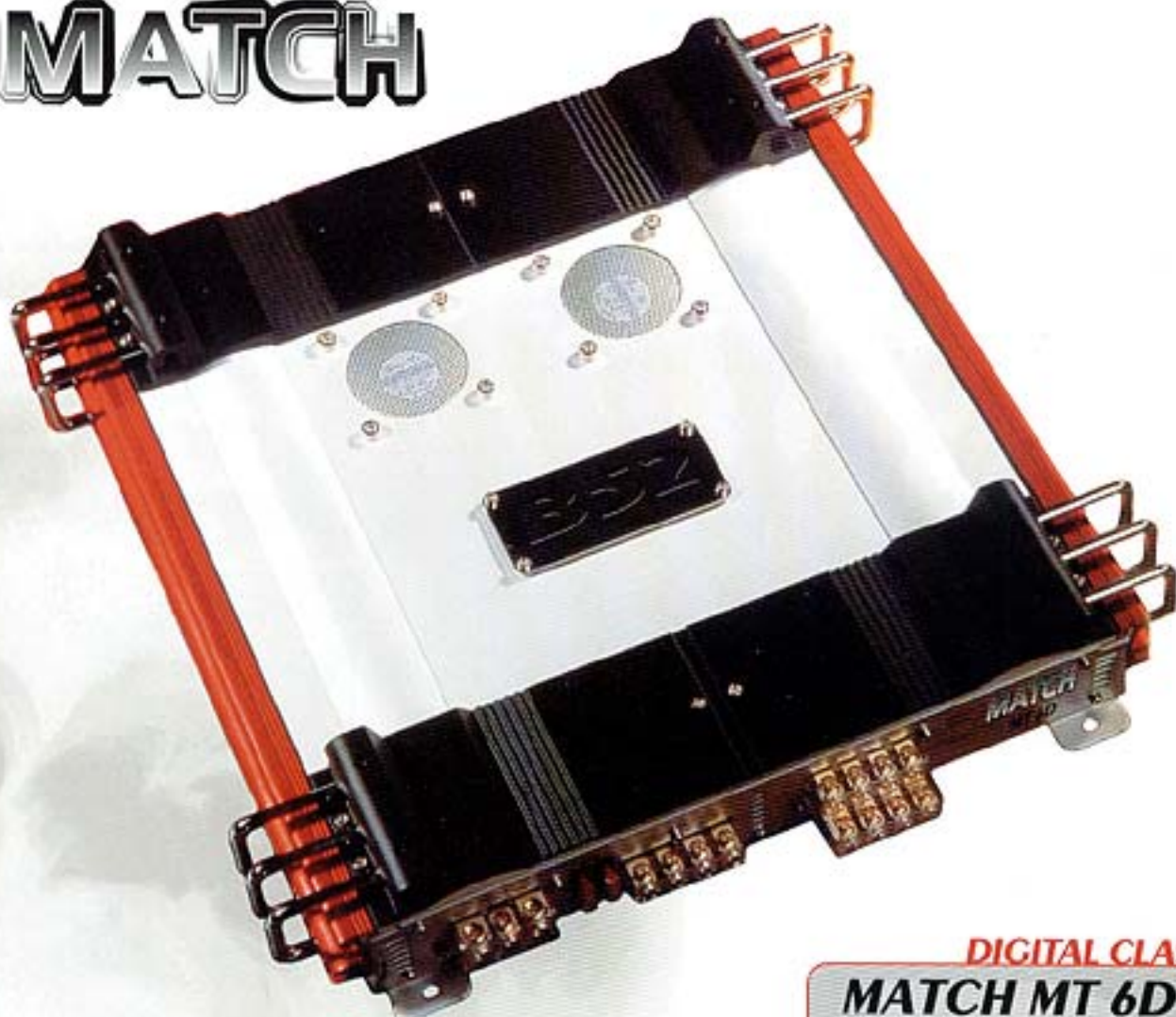
Max Power 2 Ohms: 400w x 4
 RMS Power 4 Ohms: 150w x 4
 Bridge Power 4 Ohms: 800w x 2
 S/N Ratio: 105dB
 THD: 0.05%
 Channel Separation: 59dB
 Frequency Response: 10Hz-10KHz
 Input Sensitivity: 200mV/5V
 X-Over Double: Yes
 X-Over Selectable: Yes
 High Pass Frequency: 50Hz-500Hz
 Band Pass Frequency: Upper 3KHz-6KHz
 Band Pass Frequency: Lower 50Hz-500Hz
 Low Pass Frequency: 50Hz-500Hz
 Dimensions: 9 15/16"W x 2 1/4"H x 17"L
 Included External Subwoofer Control





MATCH

MATCH



MATCH MT 4

5209136
 Max Power 1 Ohm: 300w x 4
 Max Power 2 Ohm: 200w x 4
 RMS Power 4 Ohm: 100w x 4
 Bridge Power, 2 Ohm: 600w x 2
 S/N Ratio: 105dB
 THD: 0.02%
 Channel Separation: 62dB
 Frequency Response: 10Hz-50KHz
 Input Sensitivity: 100mV/V
 X-Over Double: Yes
 X-Over Selectable: Yes (24dB)
 High Pass Variable X-Over: 120Hz To 750Hz
 Low Pass Variable X-Over: 50Hz-120Hz
 Dimensions: 15"W x 2 1/2"H x 18"L
 Included External Subwoofer Control

MATCH MT 5

5209147
 Max Power 1 Ohm: 700w x 4
 Max Power 2 Ohm: 400w x 4
 RMS Power 4 Ohm: 200w x 4
 Bridge Power, 2 Ohm: 1200w x 2
 S/N Ratio: 105dB
 THD: 0.02%
 Channel Separation: 62dB
 Frequency Response: 10Hz-50KHz
 Input Sensitivity: 100mV/V
 X-Over Double: Yes
 X-Over Selectable: Yes (24dB)
 High Pass Variable X-Over: 120Hz To 750Hz
 Low Pass Variable X-Over: 50Hz-120Hz
 Dimensions: 15"W x 2 1/2"H x 20"L
 Included External Subwoofer Control

DIGITAL CLASS

MATCH MT 6D

5209154
 Digital Amplifier High Efficient 90%
 Max Power 1 Ohm: 1000w x 4
 Max Power 2 Ohm: 600w x 4
 RMS Power 4 Ohm: 300w x 4
 Bridge Power, 2 Ohm: 2000w x 2
 S/N Ratio: 105dB
 THD: 0.02%
 Channel Separation: 62dB
 Frequency Response: 10Hz-50KHz
 Input Sensitivity: 100mV/V
 X-Over Double: Yes
 X-Over Selectable: Yes (24dB)
 High Pass Variable X-Over: 120Hz To 750Hz
 Low Pass Variable X-Over: 50Hz-120Hz
 Dimensions: 17"W x 2 1/2"H x 21"L
 Included External Subwoofer Control



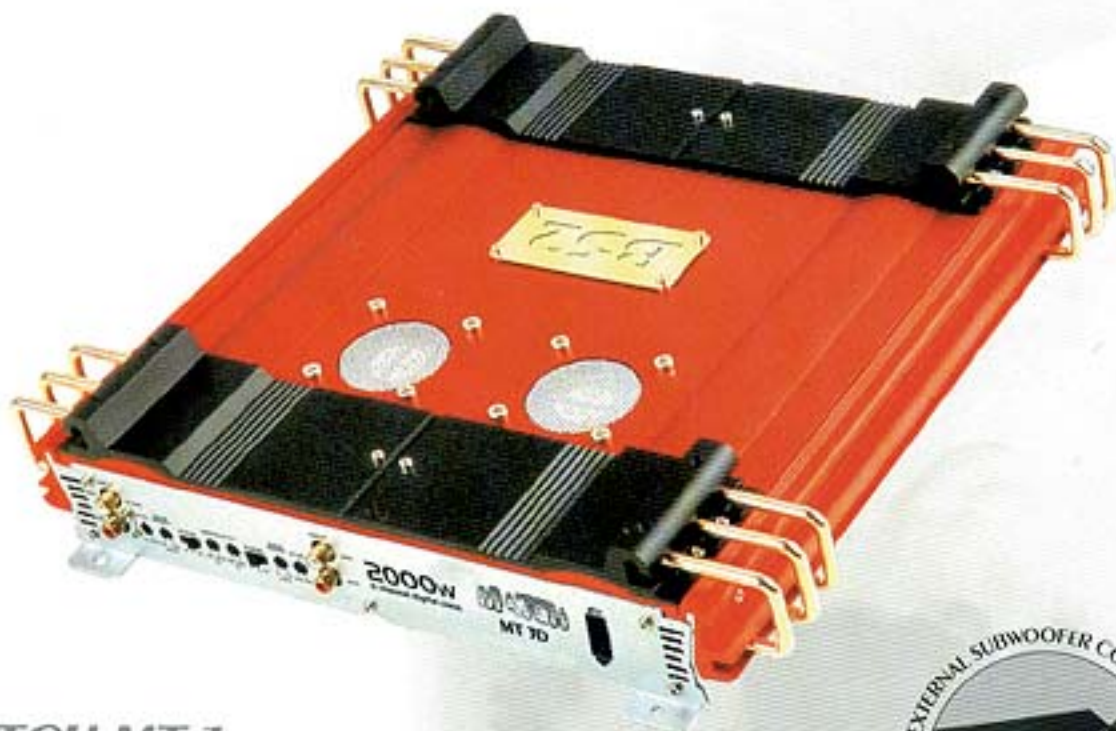


AMPLIFIERS

MATCH

1 Ohm Stable
 External Subwoofer Control Included
 Mosfet Power Supply
 Double Sided Circuit Board
 Dual Cooling Fans
 Triode Operation
 B&B Bass Boost

Low/Hi Pass Variable Crossover
 24dB Slope Crossover
 Hi/Low Input
 Gold Plated RCA Low Level Inputs
 Power & Protection LEDs
 Variable Input Gain Control



MATCH MT 1

520910Y

Max Power 1 Ohm: 300w x 2
 Max Power 2 Ohm: 200w x 2
 RMS Power 4 Ohm: 100w x 2
 Bridge Power, 2 Ohm: 600w
 S/N Ratio: 105dB
 THD: 0.02%
 Channel Separation: 62dB
 Frequency Response: 10Hz-50KHz
 Input Sensitivity: 100mV/V
 X-Over Selectable: Yes (24dB)
 High Pass Variable X-Over: 120Hz To 750Hz
 Low Pass Variable X-Over: 50Hz-120Hz
 Dimensions: 15"W x 2 1/2"H x 15"L
 Included External Subwoofer Control

MATCH MT 2

520918B

Max Power 1 Ohm: 700w x 2
 Max Power 2 Ohm: 400w x 2
 RMS Power 4 Ohm: 200w x 2
 Bridge Power, 2 Ohm: 1200w
 S/N Ratio: 105dB
 THD: 0.02%
 Channel Separation: 62dB
 Frequency Response: 10Hz-50KHz
 Input Sensitivity: 100mV/V
 X-Over Selectable: Yes (24dB)
 High Pass Variable X-Over: 120Hz To 750Hz
 Low Pass Variable X-Over: 50Hz-120Hz
 Dimensions: 15"W x 2 1/2"H x 17"L
 Included External Subwoofer Control



EXTERNAL SUBWOOFER CONTROL
 INCLUDED WITH ALL MATCH AMPS

DIGITAL CLASS

MATCH MT 3D

520912T

Digital Amplifier High Efficient 90%
 Max Power 1 Ohm: 1000w x 2
 Max Power 2 Ohm: 600w x 2
 RMS Power 4 Ohm: 300w x 2
 Bridge Power, 2 Ohm: 2000w
 S/N Ratio: 105dB
 THD: 0.02%
 Channel Separation: 62dB
 Frequency Response: 10Hz-50KHz
 Input Sensitivity: 100mV/V
 X-Over Selectable: Yes (24dB)
 High Pass Variable X-Over: 120Hz To 750Hz
 Low Pass Variable X-Over: 50Hz-120Hz
 Dimensions: 15"W x 2 1/2"H x 18"L
 Included External Subwoofer Control





AMPLIFIER INSTALLATION KIT

KIT-300

7500587

All the required power cables, control cables and hardware quickly and easily install a power amplifier in your vehicle.



- 17 ft. 8 ga. Red Power Cable
- 3 ft. 8 ga. Black Ground Cable
- 25 ft. 16 ga. Speaker Cable
- 17 ft. 18 ga. Blue Remote Turn-On Wire
- 17 ft. RCA Cable
- 1) Waterproof AGU Fuse Holder
- 1) 40A Fuse
- 2) 5/16" Ring Terminal
- 2) 1/4" Ring Terminal



KIT-600

7500547

All the required power cables, control cables and hardware quickly and easily install a power amplifier in your vehicle.



- 20 ft. 4ga. Blue Power Cable with 5/16" Ring Terminal
- 3 ft. 4ga. Clear Silver Ground Cable with 1" Ring Terminal
- 6 ft. 8ga. Blue Power Cable
- 6 ft. 8ga. Clear Silver Ground Cable
- 18 ft. 18ga. Blue Remote Turn-On Wire
- 2 x 17 ft. Double Shielded RCA Cable with Central Remote Wire
- 6 ft. Split Loom Tubing
- 1) Battery Terminal
- 1) AGU Fuse Holder with Terminal Adapter
- 1) Power Distribution Block
- 1) Heavy Duty Power Terminal
- 1) 4ga. 3/8" Red Ring Terminal
- 1) 4ga. Black Spade Terminal
- 4) 8ga. Black Spade Terminals
- 2) 18-22ga. Spade Terminals
- 2) 8ga. Butt Connectors
- 2) 18-22ga. Red Butt Connectors
- 1) 8ga. Grommet
- 2) Wire Nuts
- 10) Self-Tapping Screws
- 10) Cable Ties
- 1) 40 Amp AGU Fuse

B52

OXYGEN-FREE RCA Inter Connectors

B52 offers the most popular line of cables and wires for the installation of speakers and the supply of amplifiers. This has an important significance in the final result you are going to get. Since an improper cable diminish equipment performance.

PRV/A 1.5

T29117

Clear signal cable w/RCA
Low noise RCA interconnects
Dual shielded cable
Optimal signal transfer
Competition series
Oxygen-free
Longitude: 15 ft. (0.45 ms.)
Available in Blue, Yellow & Violet



PRV/A 3

T29126

Clear signal cable w/RCA
Low noise RCA interconnects
Dual shielded cable
Optimal signal transfer
Competition series
Oxygen-free
Longitude: 3 ft. (1 ms.)
Available in Blue, Yellow & Violet



CY2M

T500252

Clear signal cable w/RCA
One female / Two male
Low noise Y connector
Dual shielded cable
Optimal signal transfer
Competition series
Oxygen-free
Longitude: 0.5 ft. (0.15 ms.)
Available in Blue, Yellow & Violet

PRV/A 6

T29155

Clear signal cable w/RCA
Low noise RCA interconnects
Dual shielded cable
Optimal signal transfer
Competition series
Oxygen-free
Longitude: 6 ft. (1.8 ms.)
Available in Blue, Yellow & Violet

PRV/A 12

T29144

Clear signal cable w/RCA
Low noise RCA interconnects
Dual shielded cable
Optimal signal transfer
Competition series
Oxygen-free
Longitude: 12 ft. (3.6 ms.)
Available in Blue, Yellow & Violet

PRV/A 20

T29153

Clear signal cable w/RCA
Low noise RCA interconnects
Dual shielded cable
Optimal signal transfer
Competition series
Oxygen-free
Longitude: 20 ft. (6 ms.)
Available in Blue, Yellow & Violet

CY2F

T500261

Clear signal cable w/RCA
Two female / One male
Low noise Y connector
Dual shielded cable
Optimal signal transfer
Competition series
Oxygen-free
Longitude: 0.5 ft. (0.15 ms.)
Available in Blue, Yellow & Violet





POWER CABLE

20 GA - R/B

1508701
Power cable
Precision engineered
to maximize performance.
Competition Use.
Oxygen-free
20 Gauge (0.50 mm²)
Spool x 300 ft. (91.5 mts.)
Available in red & black.

16 GA - R/B

1508603
Power cable
Precision engineered
to maximize performance.
Competition Use.
Oxygen-free
16 Gauge (1.5 mm²)
Spool x 300 ft. (91.5 mts.)
Available in red & black.

14 GA - R/B

1508505
Power cable
Precision engineered
to maximize performance.
Competition Use.
Oxygen-free
14 Gauge (2 mm²)
Spool x 100 ft. (30.5 mts.)
Available in red & black.



12 GA - R/B

1508407
Power cable
Precision engineered
to maximize performance.
Competition Use.
Oxygen-free
12 Gauge (3 mm²)
Spool x 100 ft. (30.5 mts.)
Available in red & black.



10 GA - R/B

1508309
Power cable
Precision engineered
to maximize performance.
Competition Use.
Oxygen-free
10 Gauge (6 mm²)
Spool x 100 ft. (30.5 mts.)
Available in red & black.

8 GA - R/B

1508201
Power cable
Precision engineered
to maximize performance.
Competition Use.
Oxygen-free
8 Gauge (10 mm²)
Spool x 100 ft. (30.5 mts.)
Available in red & black.

4 GA - R/B

1508096
Power cable
Precision engineered
to maximize performance.
Competition Use.
Oxygen-free
4 Gauge (25 mm²)
Spool x 100 ft. (30.5 mts.)
Available in red & black.

SPEAKER WIRE



BP 24

1508014
Ultraflex speaker wire
Cable red & black
Precision engineered
to maximize performance
Professional use
24 Gauge x 2 (2 x 0.25 mm²)
Roll x 328 ft.(100 ms.)



BP 22

1508023
Ultraflex speaker wire
Cable red & black
Precision engineered
to maximize performance
Professional use
22 Gauge x 2 (2 x 0.35 mm²)
Roll x 328 ft.(100 ms.)



BP 20

1508032
Ultraflex speaker wire
Cable red & black
Precision engineered
to maximize performance
Professional use
20 Gauge x 2 (2 x 0.50 mm²)
Roll x 328 ft.(100 ms.)



BP 17

1508041
Ultraflex speaker wire
Cable red & black
Precision engineered
to maximize performance
Professional use
17 Gauge x 2 (2 x 1 mm²)
Roll x 328 ft.(100 ms.)



BP 15

1508076
Ultraflex speaker wire
Cable red & black
Precision engineered
to maximize performance
Professional use
15 Gauge x 2 (2 x 2 mm²)
Roll x 328 ft.(100 ms.)



B52 CBP 20

1508050
Ultraflex speaker wire
Clear cable
Precision engineered
to maximize performance
Professional use
20 Gauge x 2 (2 x 0.5 mm²)
Roll x 328 ft.(100 ms.)



CBP 18

1508069
Ultraflex speaker wire
Clear cable
Precision engineered
to maximize performance
Professional use
18 Gauge x 2 (2 x 0.75 mm²)
Roll x 328 ft.(100 ms.)



CBP 17

1508078
Ultraflex speaker wire
Clear cable
Precision engineered
to maximize performance
Professional use
17 Gauge x 2 (2 x 1 mm²)
Roll x 328 ft.(100 ms.)



CBP 416

Ultraflex speaker wire
Clear cable
Precision engineered
to maximize performance
Professional use
16 Gauge x 4 (4 x 1.5 mm²)
Roll x 328 ft.(100 ms.)



CBP 16

1508085
Ultraflex speaker wire
Clear cable
Precision engineered
to maximize performance
Professional use
16 Gauge x 2 (2 x 1.5 mm²)
Roll x 328 ft.(100 ms.)



CBP 15

1508094
Ultraflex speaker wire
Clear cable
Precision engineered
to maximize performance
Professional use
15 Gauge x 2 (2 x 2 mm²)
Roll x 328 ft.(100 ms.)





F 18

713-446
 AGU Fuse Holder
 High Quality
 ABS Body
 For Standard AGU Fuse
 4/8 GA In to 4/8 GA Out



F-AGU

4204300 - F-AGU 25: 25A
 4204408 - F-AGU 30: 30A
 4204506 - F-AGU 40: 40A
 4204604 - F-AGU 50: 50A
 4204702 - F-AGU 60: 60A
 Available in Packages of 5 pcs.
 Standard AGU Fuse
 High Quality
 Gold Fuse



TB 82 P

cod. 7500541
 Battery Terminal
 High Temperatures Resistant
 (+) Positive Terminal
 High Quality
 Accepts (2) 8GA



TB 82 N

7500550
 Battery Terminal
 High Temperatures Resistant
 (-) Positive Terminal
 High Quality
 Accepts (2) 8GA



TB 24 P

7500561
 Battery Terminal
 High Temperatures Resistant
 (+) Positive Terminal
 High Quality
 4GA x 2 + 8 GA x 1 Out



TB 24 N

7500570
 Battery Terminal
 High Temperatures Resistant
 (-) Positive Terminal
 High Quality
 4GA x 2 + 8 GA x 1 Out



F 48

713-426
 AGU Fuse Holder
 High Quality
 ABS Body
 For Standard AGU Fuse
 4/8 GA In to 4/8 GA Out



DB 84

713-455
 Distribution Block
 High Temperatures Resistant
 Eliminates Multiple Power Supply Leads
 from the Battery or Ground Accepts
 High Quality
 4GA In to 8 GA x 2 Out





HIGH END ACCESSORIES

PB 82

7500412
Battery Caps
Rubber Cover
For Battery Terminal
Positive & Negative Caps
High Quality
Blister packed with 1 red and 1 white



PB 24

7500450
Battery Caps
Rubber Cover
For Battery Terminal
Positive & Negative Caps
High Quality
Blister packed with 1 red and 1 white



TM 18

7500609
Gold ring terminals
Accepts 8ga cables
Tapered ends to fit amp terminal strip
Blister packed with 4 red and 4 black



TM 14

7500616
Gold ring terminals
Accepts 4ga cables
Tapered ends to fit amp terminal strip
Blister packed with 4 red and 4 black



TM 28

cod. 7500627
Gold spade terminals
Accepts 8ga cables
Tapered ends to fit amp terminal strip
Blister packed with 4 red and 4 black



TM 24

cod. 7500636
Gold spade terminals
Accepts 4ga cables
Tapered ends to fit amp terminal strip
Blister packed with 4 red and 4 black



PTM 18

cod. 7500645
Power terminals
Ring terminals
Accepts 8ga cables
Blister packed with 1 red and 1 black



PTM 14

cod. 7500654
Power terminals
Ring terminals
Accepts 4ga cables
Blister packed with 1 red and 1 black



PTM 28

cod. 7500663
Power terminals
Spade terminals
Accepts 8ga cables
Blister packed 2 pieces



PTM 24

cod. 7500672
Power terminals
Spade terminals
Accepts 4ga cables
Blister packed 2 pieces



B52

SUBWOOFER THIELE-SMALL PARAMETERS

MODEL		EV-830	EV-1040	EV1250	EV1560
Impedance (+/- 10%)	Re	3.6 Ohms	3.6 Ohms	3.6 Ohms	3.6 Ohms
Coil Inductance	Lc	0.88 mH	0.90 mH	0.90 mH	0.92 mH
Electromagnetic Q	Qes	0.42	0.41	0.40	0.42
Mechanical Q	Qms	6.75	6.65	6.58	6.42
Total Q	Qts	0.39	0.40	0.38	0.37
Compliance Equivalent Volume	Vas	0.72 cu.ft (20.5 L)	1.25 cu.ft (35.5 L)	1.82 cu.ft (51.5 L)	4.08 cu.ft (115.5 L)
Peak Diaphragm Displacement Volume	Vd	97.95 cc	98.7 cc	99.85 cc	100.86 cc
Mechanical compliance of suspension	Cms	0.5367 mm/N	0.3305 mm/N	0.2056 mm/N	0.2143 mm/N
BL Product	BL	9.89 Tm	10.2 Tm	10.9 Tm	11.3 Tm
Diaphragm Mass inc. Airdrag	Mms	50.25 grams	51.15 grams	51.85 grams	52.3 grams
Efficiency Bandwidth Product	EBP	86.36	86.90	87.23	87.68
Voice Coil Overhang	Xmax	0.23" (5.9 mm)	0.24" (6.2 mm)	0.27" (6.8 mm)	0.30" (7.5 mm)
SURFACE AREA OF CONE	Sd	25.42 sq.in (164 cm ²)	42.63 sq.in (275 cm ²)	65.10 sq.in (420 cm ²)	95.48 sq.in (616 cm ²)
Impedance at Resonance	Zmax	42.62 ohms	43.6 ohms	43.8 ohms	44 ohms
Resonant Frequency	fs	30.65 Hz	38.71 Hz	48.75 Hz	47.54 Hz
Eqiv. Resistance of Suspension loss	Rms	1.43 Kg/s	1.87 Kg/s	2.41 Kg/s	2.43 Kg/s
Piston Diameter	dia	5.69 in (14.45 cm)	7.37 in (18.71 cm)	9.1 in (23.12 cm)	11.03 in (28.01 cm)
Referencia de eficiencia	no	0.14%	0.48%	1.44%	2.85%
Sensitivity	SPL	90 dB	92 dB	97.25 dB	96.75 dB
Frequency Response	fs	30-10000HZ	28-10000HZ	25-10000HZ	23-9000HZ
Max. Power	Pe	300W	400W	500W	600W
Voice Coil		1 x 4 ohms	1 x 4 ohms	1 x 4 ohms	1 x 4 ohms

MODEL		FR-610	FR-812	FR-1015
Impedance (+/- 10%)	Re	3.6 Ohms	3.6 Ohms	3.6 Ohms
Coil Inductance	Lc	0.91 mH	0.92 mH	0.93 mH
Electromagnetic Q	Qes	0.41	0.40	0.41
Mechanical Q	Qms	6.73	6.59	6.41
Total Q	Qts	0.38	0.37	0.36
Compliance Equivalent Volume	Vas	1.28 cu.ft (36.2 L)	1.86 cu.ft (52.7 L)	4.11 cu.ft (116.5 L)
Peak Diaphragm Displacement Volume	Vd	98.85 cc	98.99 cc	100.98 cc
Mechanical compliance of suspension	Cms	0.3920 mm/N	0.2570 mm/N	0.2162 mm/N
BL Product	BL	10.25 Tm	10.98 Tm	11.45 Tm
Diaphragm Mass inc. Airdrag	Mms	51.35 grams	51.98 grams	52.36 grams
Efficiency Bandwidth Product	EBP	87.12	87.68	87.99
Voice Coil Overhang	Xmax	0.26" (6.5 mm)	0.28" (7.2 mm)	0.31" (7.8 mm)
SURFACE AREA OF CONE	Sd	39.53 sq.in (255 cm ²)	58.90 sq.in (380 cm ²)	95.48 sq.in (616 cm ²)
Impedance at Resonance	Zmax	43.76 ohms	43.98 ohms	44.16 ohms
Resonant Frequency	fs	35.47 Hz	43.55 Hz	47.31 Hz
Eqiv. Resistance of Suspension loss	Rms	1.70 Kg/s	2.16 Kg/s	2.43 Kg/s
Piston Diameter	dia	7.1 in (18.02 cm)	8.66 in (22 cm)	11.03 in (28.01 cm)
Referencia de eficiencia	no	0.38%	1.05%	2.9%
Sensitivity	SPL	93 dB	93 dB	96.82 dB
Frequency Response	fs	35-10000HZ	30-10000HZ	25-9000HZ
Max. Power	Pe	600W	800W	1000W
Voice Coil		2 x 4 ohms	2 x 4 ohms	2 x 4 ohms





Specification in this catalog
subject to change without notice.

Important Safety Notice

It is unlawful in most jurisdictions for a person to drive a motor vehicle which is equipped with a television viewer or screen that is located in the motor vehicle at any point forward of the back of the driver's seat, or that is visible, directly or indirectly, to the driver while operating the vehicle. LCD Monitor should only be installed to the rear of the back of the driver's seat where it will not be visible, directly or indirectly, to the operator of the motor vehicle.



B52